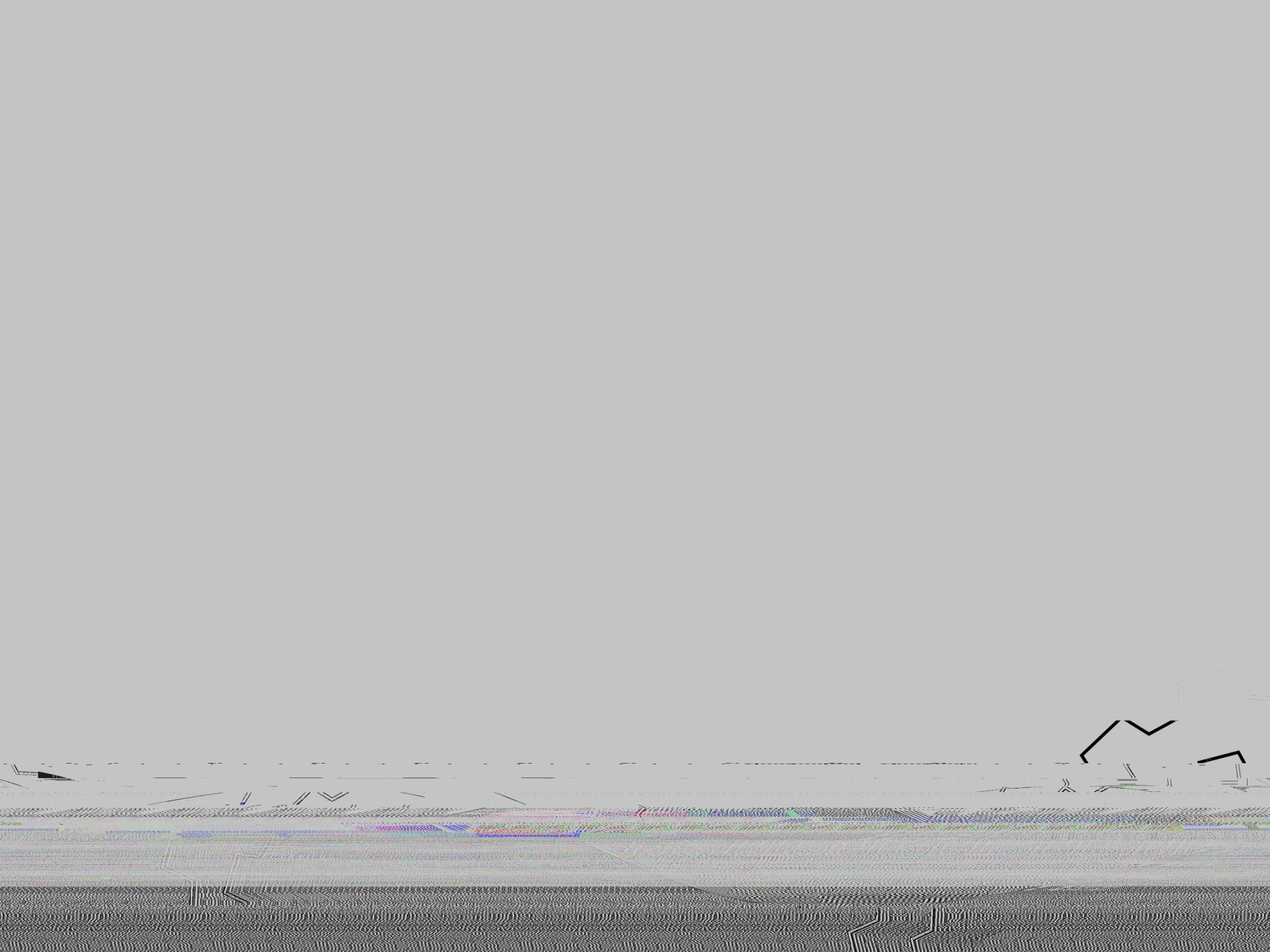




# Consultation New School in Saint-Laurentides

## Complimentary Information for Pinewood Elementary School



## Criteria for establishing school zone for new school

- ! Distance from different sectors to new school or to an existing one
- ! Travelling time
- ! Number of bus transfers
- ! Natural geographical boundaries
- ! Division by cities

## Guiding principles

- ! Provide the best educational services possible to students.
- ! Ensure quality of opportunity for success to all students and services to meet their needs.
- ! Ensure that the allocation of human, financial and material resources among is equitable.
- ! Ensure the optimal use of schools to offer quality services.

# Proposed Revision of the Pinewood Elementary School Zone

La Plain has been identified as a sector to be removed from the Pinewood Elementary School Zone and included in the Saint-Lin-Laurentides School Zone.

## Advantages

- ! Alleviate the overcrowding situation



# Proposed Revision of the Franklin Hill Elementary School Zone

St-Jean, Mascouche (South) and along Highway 25, commonly known as "the Boord" from the Franklin Hill Elementary School Zone and included in the Renwood School Zone

## Advantages

- ! Closer school for the community
- ! Reduced travelling time
- !

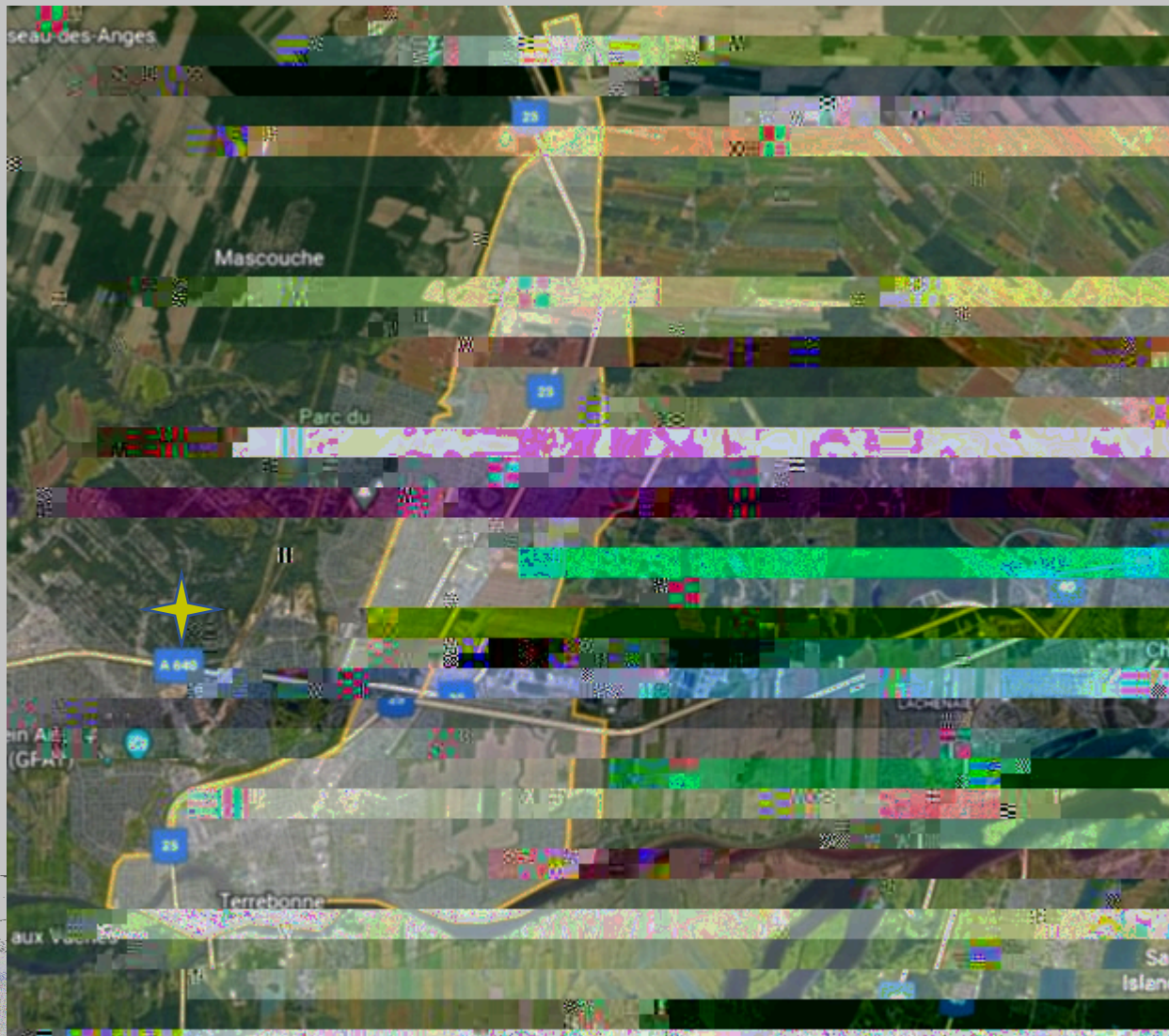


# Proposed Sector- La Plaine (Map)





# Proposed Sector- Boot (Map)















\*e2%86  
6\$1&+(

6LU :LOIULG /DXULHU 6FKRRO %RDUG  
,PSUHVVLQRQ GHV EDVVLQV  
/LVWH GHV EDVVLQV

3DJH

---

%DVVLQ 1RP

/LPLWH

---

6\$6 7HVWBVDLQW /LQBODSODLQH 2XL

9L(

ODVFRXFKH

1RP JHQUH HW RULHQWDWLRQ GH OD U1R FLYLTXHV SD1R FLYLTXHV LPSDLUV  
1HZWRQ &KHPLQ

\*e2%86  
6\$1&+(

6LU :LOIULG /DXULHU 6FKRRO %RDUG  
,PSUHVLRQ GHV EDVVLQV  
/LVWH GHV EDVVLQV

---



\*e2%86  
6\$1&+(

6LU :LOIULG /DXULHU 6FKRRO %RDUG  
,PSUHVLRQ GHV EDVVLQV  
/LVWH GHV EDVVLQV

3DJH

---

%DVVLQ 1RP

/LPLWH

---

9L(  
7HUUHERQQH

1RP JHQUH HW RULHQWDWLRQ GH OD U1R FLYLTXHV SD1R FLYLTXHV LPSDLUV  
GH O eWRLOH 5XH  
GH O +pPpURFDOOH 5XH  
GH O +HUEH %OHXH 5XH





\*e2%86  
6\$1&+(

6LU :LOIULG /DXULHU 6FKRRO %RDUG  
,PSUHVLRQ GHV EDVVLQV  
/LVWH GHV EDVVLQV

---

3DJH

\*e2%86  
6\$1&+(

6LU :LOIULG /DXULHU 6FKRRO %RDUG  
,PSUHVLRQ GHV EDVVLQV  
/LVWH GHV EDVVLQV

3DJH

---

%DVVLQ 1RP

/LPLWH

9L( 7HUUHERQQH

1RP JHQUH HW RULHQWDWLRQ GH OD U1R FLYLTXHV SD1R FLYLTXHV LPSDLUV